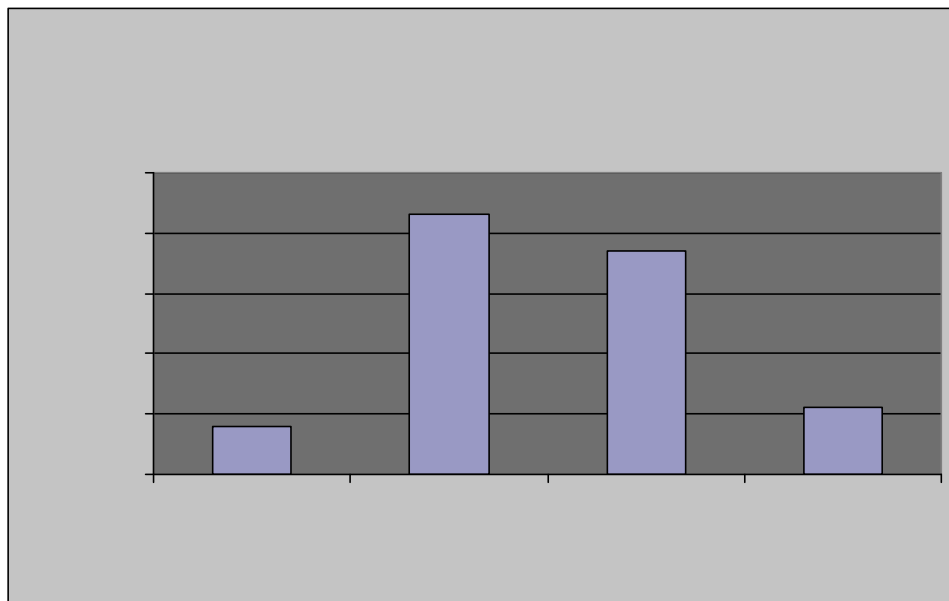
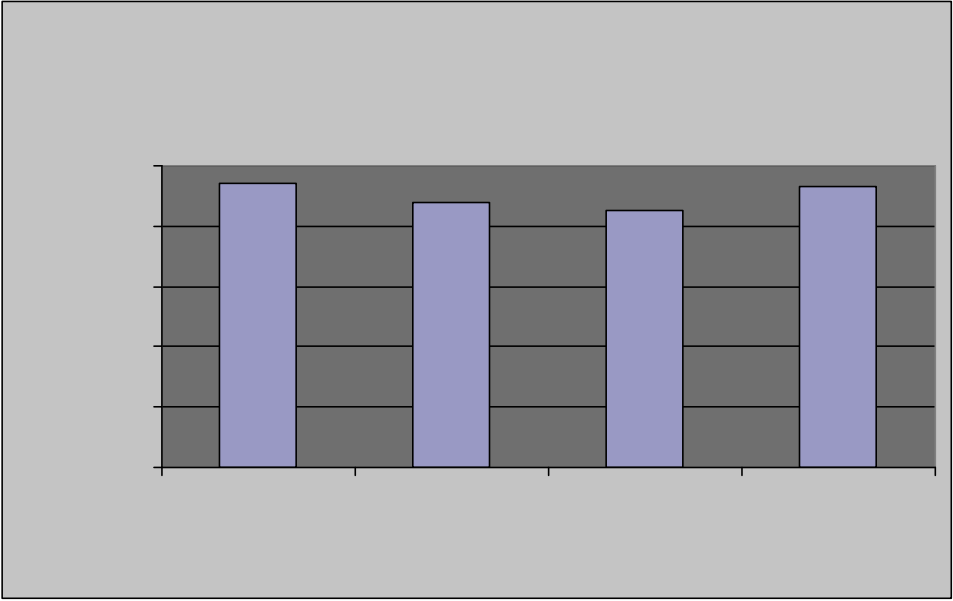


Results

1. Grade 7 writing achievement: Spring 2009

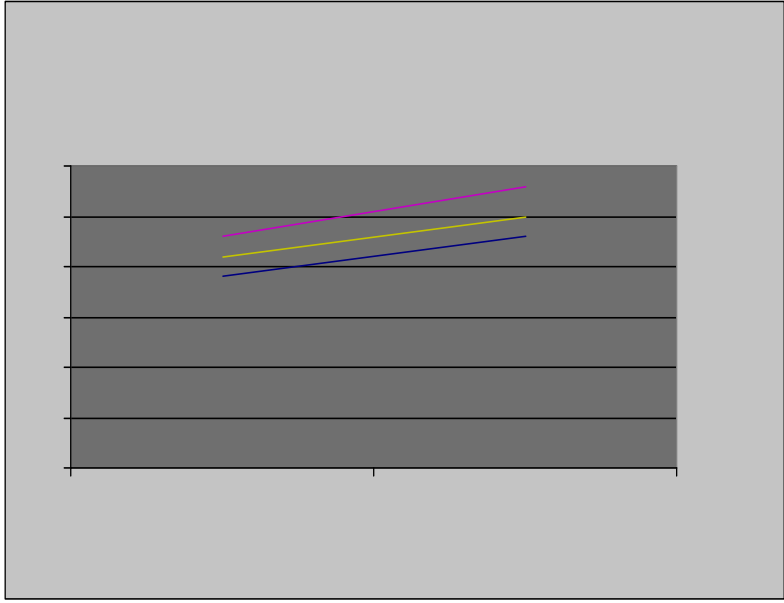
- At the end of grade 7, over 90% of students in Peace River North achievement expectations on an impromptu writing assessment.
- Approximately one-half of students (48%) produced writing at the top two levels of the performance standards, fully meeting or exceeding grade level expectations.
- Using a four-point scale, where 1=not yet meeting expectations, and 4=exceeding expectations, the average score was 2.5 – midway between meeting expectations at a minimal/moderate level, and fully meeting expectations.





2. Growth in Grade 7 writing achievement: Fall 2008 to Spring 2009

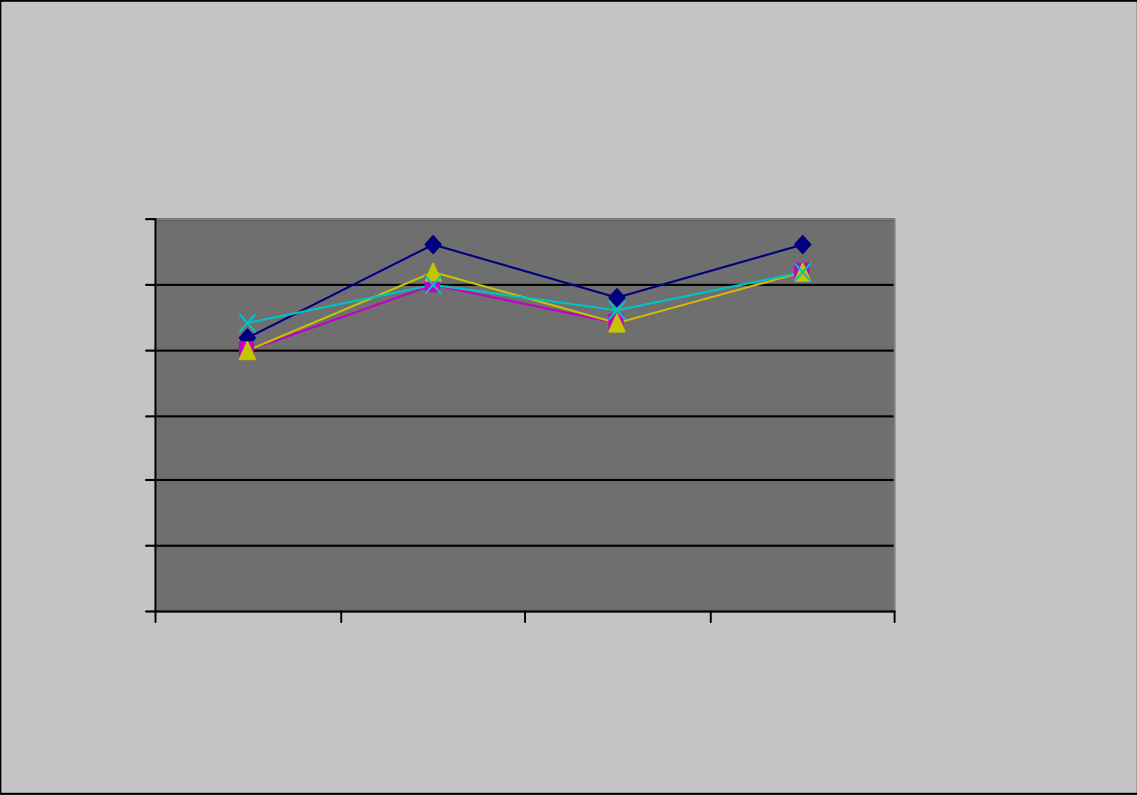
- During their grade 7 school year, students showed improvement in their writing performance moving from:



o

**Student Performance on Specific Writing Standards:
Grade 6 through Grade 7 (Matched cases only: n=231)**

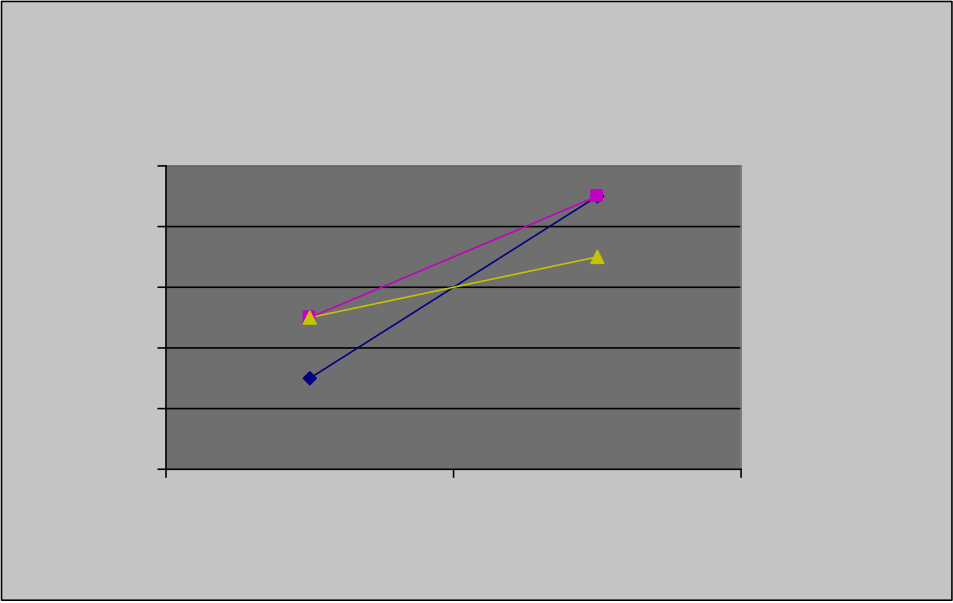
	Grade 6 standards	Grade 7 standards	
Assessment session	Spring 08	Fall 08	Spring 09
Mean score*			
All	2.6	2.3	2.7
Male	2.4	2.1	2.4
Female			



4. Changes in achievement by school

Both the grade 7 assessment (2008-09), and the grade 6-7 assessment (2007-2009) were analyzed by school focusing on changes in achievement over time. In both cases, there were statistically and substantially important differences in the amount of change, both for grade 7, where data were available for all schools, and for the longitudinal results over the two years of the WWP, grade 6 through 7.

- **Changes from Fall to Spring of Grade 7**
 - School-level results are easiest





- It is important to note that gains are not related to initial scores; some schools with higher initial scores did not change much while others did; similarly, some schools with lower scores changed dramatically; others did not.
- As with grade 7 results, differences are not associated with school size or location (however, note that smaller schools were not included because the small number of students makes results unstable.)
- The graphs below profile eight schools. The first graph shows how average scores changed over two years in four schools with relatively low initial achievement. The second graph shows similar information for four schools with relatively high initial achievement.
- As these graphs demonstrate, schools demonstrated different levels and different patterns of gains over the four impromptu assessments.

